

Christmas Songs for Band Kids

Flute
Mallets

The following is a collection of traditional Christmas hymns and popular songs for band students to play for fun. The songs are in no particular order. The songs are transposed for each instrument so that you can play together with your friends. Have fun!

Jingle Bells

Two staves of musical notation for the song "Jingle Bells". The music is written in a treble clef with a key signature of one flat (Bb) and a 4/4 time signature. The melody consists of eighth and sixteenth notes, characteristic of the original song.

Up On The Housetop

Two staves of musical notation for the song "Up On The Housetop". The music is written in a treble clef with a key signature of one flat (Bb) and a 4/4 time signature. The melody features eighth and sixteenth notes, capturing the lively spirit of the hymn.

Jolly Old St. Nicholas

Two staves of musical notation for the song "Jolly Old St. Nicholas". The music is written in a treble clef with a key signature of two flats (Bb and Eb) and a 4/4 time signature. The melody is composed of eighth and sixteenth notes, reflecting the traditional tune.

We Wish You A Merry Christmas

Musical notation for the song "We Wish You A Merry Christmas". It consists of two staves of music in 3/4 time, with a key signature of two flats (B-flat and E-flat). The melody is written in treble clef. The first staff contains the first six measures, and the second staff contains the remaining six measures, ending with a double bar line.

Deck The Halls

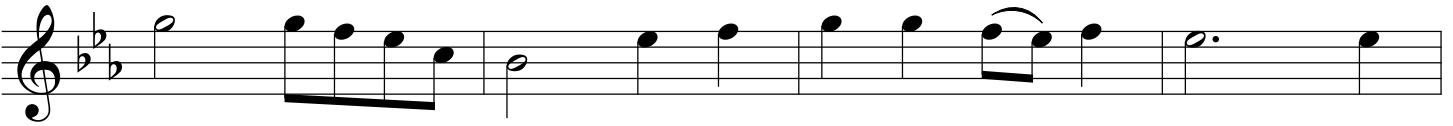
Musical notation for the song "Deck The Halls". It consists of three staves of music in 4/4 time, with a key signature of two flats (B-flat and E-flat). The melody is written in treble clef. The first staff contains the first six measures, the second staff contains the next six measures, and the third staff contains the final six measures, ending with a double bar line.

The First Noel

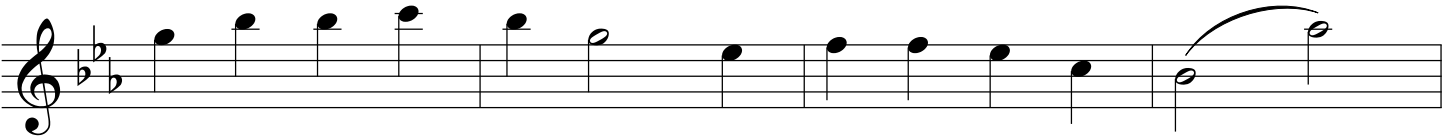
Musical notation for the song "The First Noel". It consists of three staves of music in 3/4 time, with a key signature of two flats (B-flat and E-flat). The melody is written in treble clef. The first staff contains the first six measures, the second staff contains the next six measures, and the third staff contains the final six measures, ending with a double bar line.

Go Tell It On The Mountain

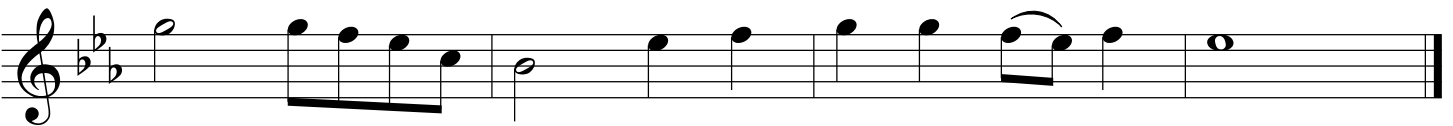
chorus



verse

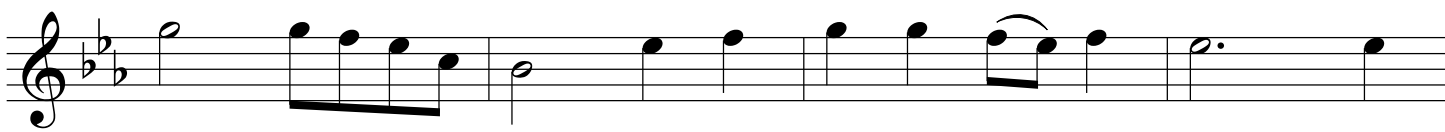
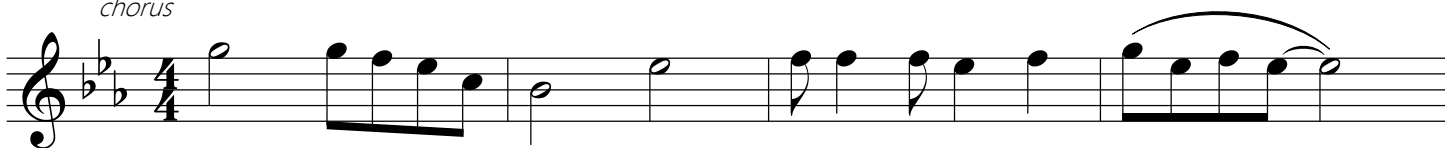


chorus

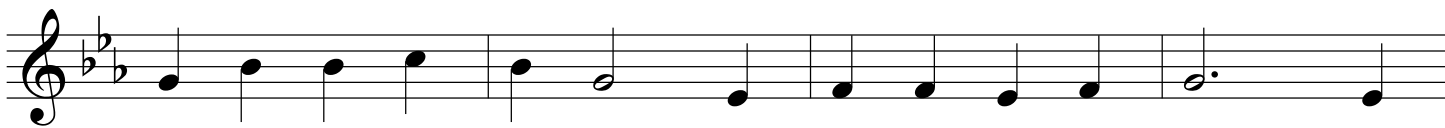


Go Tell It On The Mountain
(version for clarinets lower register)

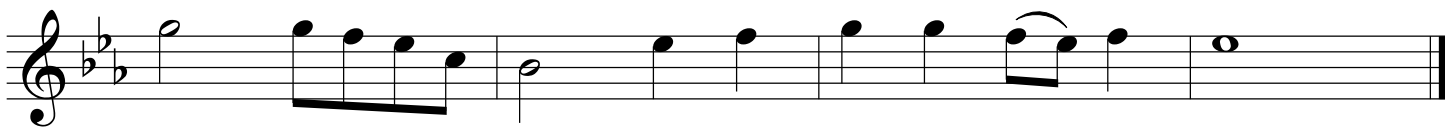
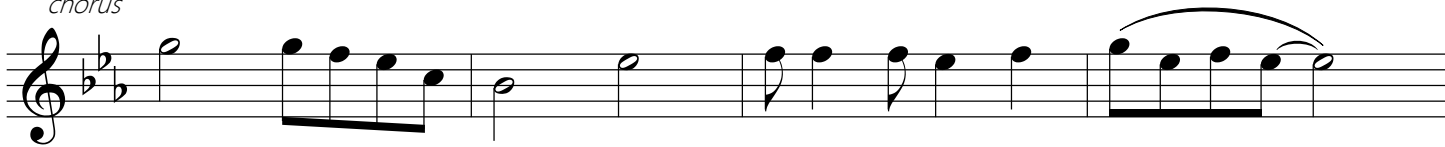
chorus



verse



chorus



God Rest Ye Merry, Gentlemen

Musical score for "God Rest Ye Merry, Gentlemen" in 4/4 time, key of B-flat major. The score consists of five staves of music. The first staff begins with a whole rest followed by a quarter rest, then a series of quarter notes: G4, A4, Bb4, C5, Bb4, A4, G4. The second staff continues with quarter notes: F4, E4, D4, C4, Bb3, A3, G3. The third staff continues with quarter notes: F3, E3, D3, C3, Bb2, A2, G2. The fourth staff continues with quarter notes: F2, E2, D2, C2, Bb1, A1, G1. The fifth staff concludes with a half note G1, a whole rest, and a final double bar line.

Away In A Manger

Musical score for "Away In A Manger" in 3/4 time, key of B-flat major. The score consists of four staves of music. The first staff begins with a quarter rest, followed by quarter notes: G4, A4, Bb4, C5, Bb4, A4, G4. The second staff continues with quarter notes: F4, E4, D4, C4, Bb3, A3, G3. The third staff continues with quarter notes: F3, E3, D3, C3, Bb2, A2, G2. The fourth staff concludes with a half note G2, a whole rest, and a final double bar line.

Hark The Herlad Angels Sing

Musical score for 'Hark The Herlad Angels Sing' in 4/4 time, key of B-flat major. The score consists of five staves of music. The melody is written in a single voice line. The first staff begins with a treble clef, a key signature of two flats (B-flat major), and a 4/4 time signature. The melody starts on a half note G4, followed by quarter notes A4, B-flat4, and A4. The second staff continues with quarter notes G4, F4, E4, and D4. The third staff has quarter notes C4, B-flat4, A4, and G4. The fourth staff has quarter notes F4, E4, D4, and C4. The fifth staff concludes with quarter notes B-flat4, A4, G4, and F4, ending with a double bar line.

O Little Town Of Bethlehem

Musical score for 'O Little Town Of Bethlehem' in 4/4 time, key of B-flat major. The score consists of four staves of music. The melody is written in a single voice line. The first staff begins with a treble clef, a key signature of two flats (B-flat major), and a 4/4 time signature. It starts with a whole rest, followed by quarter notes G4, A4, B-flat4, and A4. The second staff continues with quarter notes G4, F4, E4, and D4. The third staff has quarter notes C4, B-flat4, A4, and G4. The fourth staff concludes with quarter notes F4, E4, D4, and C4, ending with a double bar line.

Joy To The World

Musical score for 'Joy To The World' in G major, 4/4 time. The score consists of three staves. The first staff begins with a treble clef, a key signature of one sharp (F#), and a 4/4 time signature. The melody starts on G4 and moves through various intervals, including eighth and quarter notes. The second and third staves continue the melody with various rhythmic patterns, including eighth notes and quarter notes, and end with a double bar line.

O Come, O Come, Emmanuel

Musical score for 'O Come, O Come, Emmanuel' in G major, 4/4 time. The score consists of three staves. The first staff begins with a treble clef, a key signature of one sharp (F#), and a 4/4 time signature. The melody starts with a whole rest followed by a quarter rest, then begins on G4. The second and third staves continue the melody with various rhythmic patterns, including quarter and eighth notes, and end with a double bar line.

O Come All Ye Faithful

Musical score for 'O Come All Ye Faithful' in G major, 4/4 time. The score consists of three staves. The first staff begins with a treble clef, a key signature of one sharp (F#), and a 4/4 time signature. The melody starts with a whole rest followed by a quarter rest, then begins on G4. The second and third staves continue the melody with various rhythmic patterns, including quarter and eighth notes, and end with a double bar line.

Silent Night

Musical notation for the first three staves of 'Silent Night'. The music is written in treble clef, 3/4 time, and B-flat major. The first staff contains the first four measures, the second staff contains the next four measures, and the third staff contains the final four measures, ending with a double bar line.

What Child Is This

Musical notation for the first five staves of 'What Child Is This'. The music is written in treble clef, 3/4 time, and B-flat major. The first staff begins with a whole rest followed by the first four measures. The second staff contains the next four measures, the third staff contains the next four measures, the fourth staff contains the next four measures, and the fifth staff contains the final four measures, ending with a double bar line.

Angels We Have Heard On High

Musical notation for the first three staves of 'Angels We Have Heard On High'. The music is written in treble clef, 4/4 time, and B-flat major. The first staff contains the first four measures, the second staff contains the next four measures, and the third staff contains the final four measures, ending with a double bar line.

Have Yourself A Merry Little Christmas

Musical score for 'Have Yourself A Merry Little Christmas' in B-flat major, 4/4 time. The score consists of five staves of music. The first staff begins with a treble clef, a key signature of two flats (B-flat major), and a 4/4 time signature. The melody is written in a single line. The second staff continues the melody, featuring a sharp sign (F#) in the fifth measure. The third staff continues the melody with various note values and rests. The fourth staff continues the melody. The fifth staff concludes the piece with a double bar line and four measures of whole rests.

Rudolph The Red Nosed Reindeer

Musical score for 'Rudolph The Red Nosed Reindeer' in B-flat major, 4/4 time. The score consists of four staves of music. The first staff begins with a treble clef, a key signature of two flats (B-flat major), and a 4/4 time signature. The melody is written in a single line. The second staff continues the melody. The third staff continues the melody. The fourth staff concludes the piece with a double bar line.

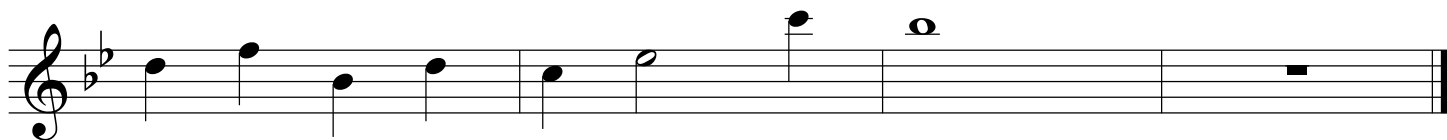
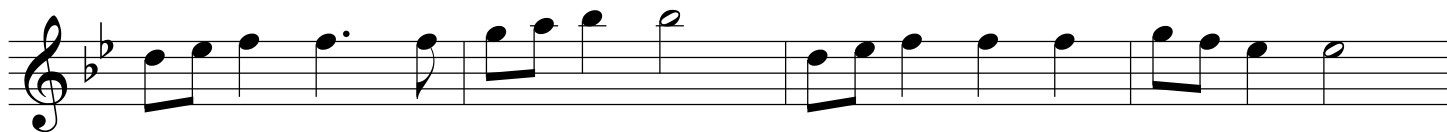
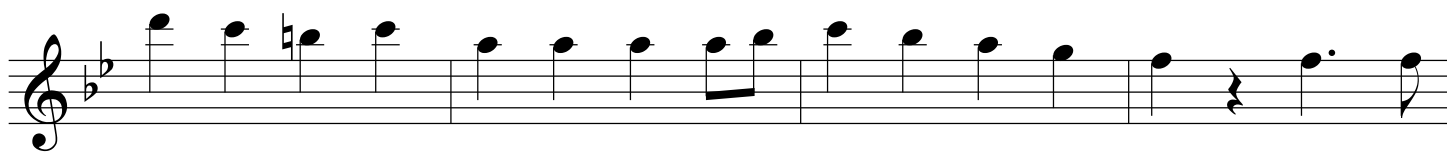
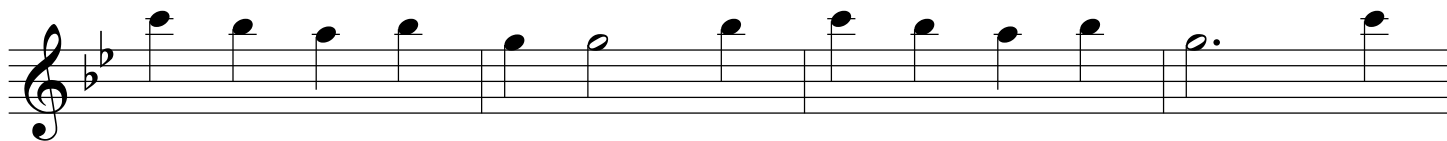
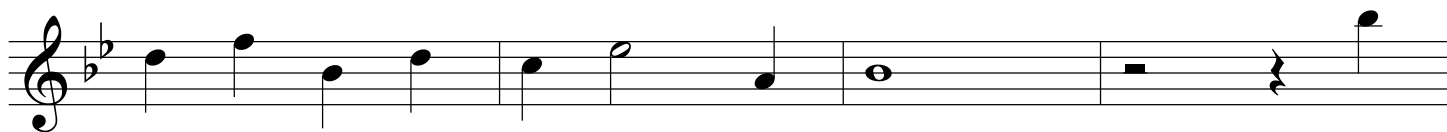
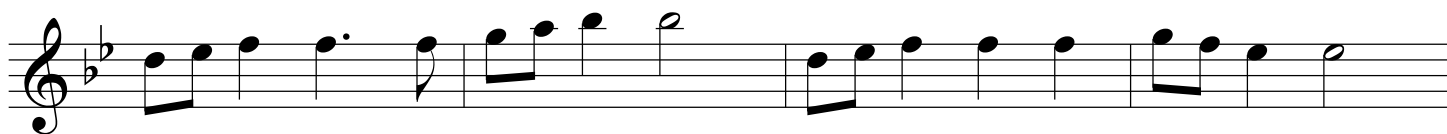
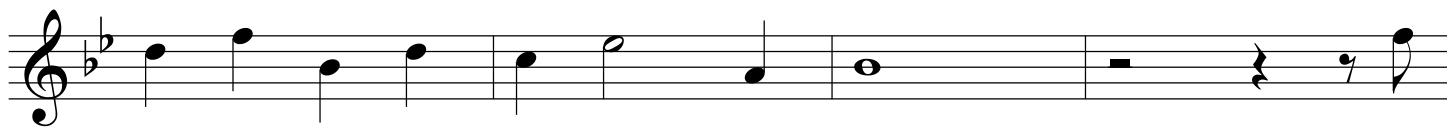
Rockin Around The Christmas Tree

Musical notation for the song "Rockin Around The Christmas Tree". It consists of four staves of music in 4/4 time, with a key signature of two flats (B-flat and E-flat). The melody is written in treble clef. The first staff begins with a treble clef, a key signature of two flats, and a 4/4 time signature. The melody consists of eighth and quarter notes, with some notes beamed together. The second staff continues the melody, featuring a sharp sign (#) above a note in the fourth measure. The third and fourth staves complete the piece, ending with a double bar line.

White Christmas

Musical notation for the song "White Christmas". It consists of four staves of music in 4/4 time, with a key signature of two flats (B-flat and E-flat). The melody is written in treble clef. The first staff begins with a treble clef, a key signature of two flats, and a 4/4 time signature. The melody starts with a whole note, followed by eighth and quarter notes, and includes a repeat sign. The second staff continues the melody with quarter and eighth notes. The third and fourth staves complete the piece, ending with a double bar line.

Santa Claus Is Coming To Town



Frosty The Snowman

The image displays a musical score for the song "Frosty The Snowman". The score is written in treble clef, 4/4 time, and B-flat major. It consists of ten staves of music. The first staff begins with a treble clef, a key signature of two flats (B-flat major), and a 4/4 time signature. The melody is composed of eighth and quarter notes, with some rests. The piece concludes with a double bar line on the final staff.

Let It Snow

The image displays a musical score for the song "Let It Snow". The score is written on a single staff in treble clef, with a key signature of three flats (B-flat, E-flat, A-flat) and a time signature of 4/4. The melody begins with a whole rest in the first measure, followed by a quarter rest in the second measure. The rest of the piece consists of a continuous sequence of notes, including quarter notes, eighth notes, and dotted notes, with some notes beamed together. The score concludes with a double bar line at the end of the eighth measure.