

Christmas Songs for Band Kids

Trombone
Baritone

The following is a collection of traditional Christmas hymns and popular songs for band students to play for fun. The songs are in no particular order. The songs are transposed for each instrument so that you can play together with your friends. Have fun!

Jingle Bells

Two staves of musical notation for the song "Jingle Bells". The first staff begins with a bass clef, a key signature of one flat (B-flat), and a 4/4 time signature. The melody consists of eighth and quarter notes, with a final whole note. The second staff continues the melody, ending with a double bar line.

Up On The Housetop

Two staves of musical notation for the song "Up On The Housetop". The first staff begins with a bass clef, a key signature of one flat (B-flat), and a 4/4 time signature. The melody features eighth and quarter notes. The second staff continues the melody, ending with a double bar line.

Jolly Old St. Nicholas

Two staves of musical notation for the song "Jolly Old St. Nicholas". The first staff begins with a bass clef, a key signature of two flats (B-flat and E-flat), and a 4/4 time signature. The melody consists of eighth and quarter notes. The second staff continues the melody, ending with a double bar line.

We Wish You A Merry Christmas

Two staves of musical notation for the song 'We Wish You A Merry Christmas'. The first staff begins with a bass clef, a key signature of two flats (B-flat and E-flat), and a 3/4 time signature. The melody consists of quarter and eighth notes. The second staff continues the melody, ending with a double bar line.

Deck The Halls

Three staves of musical notation for the song 'Deck The Halls'. The first staff begins with a bass clef, a key signature of two flats, and a 4/4 time signature. The melody features a mix of quarter, eighth, and sixteenth notes. The second and third staves continue the melody, with the third staff ending with a double bar line.

The First Noel

Three staves of musical notation for the song 'The First Noel'. The first staff begins with a bass clef, a key signature of two flats, and a 3/4 time signature. The melody is composed of quarter and eighth notes. The second and third staves continue the melody, with the third staff ending with a double bar line.

Go Tell It On The Mountain

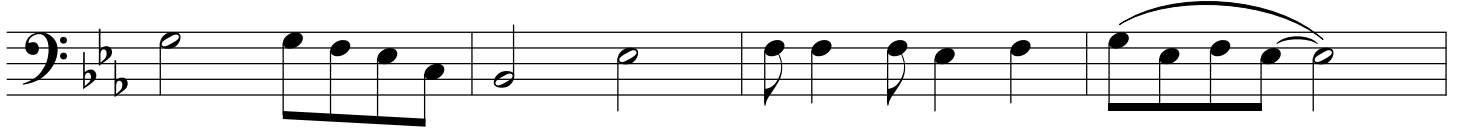
chorus



verse

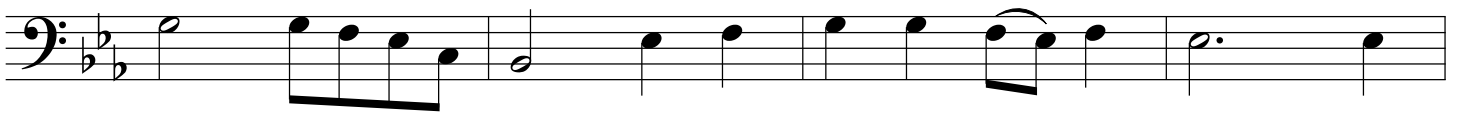


chorus

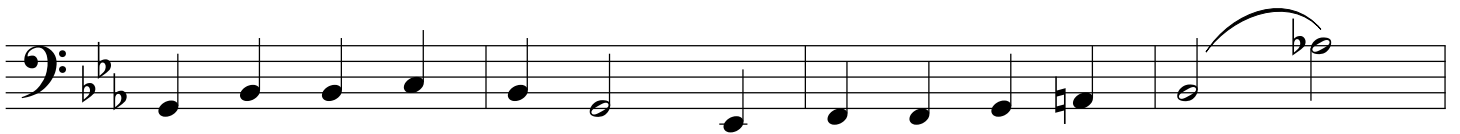
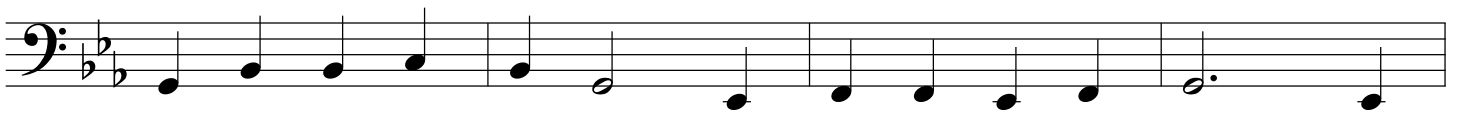


Go Tell It On The Mountain
(version for clarinets lower register)

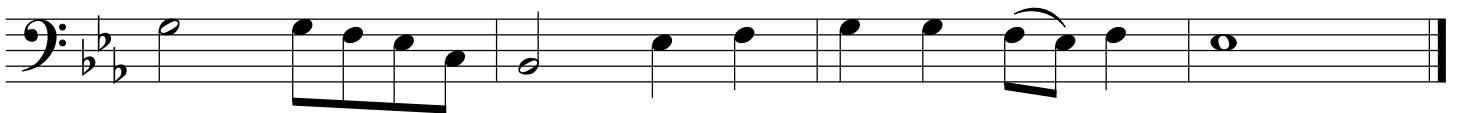
chorus



verse



chorus



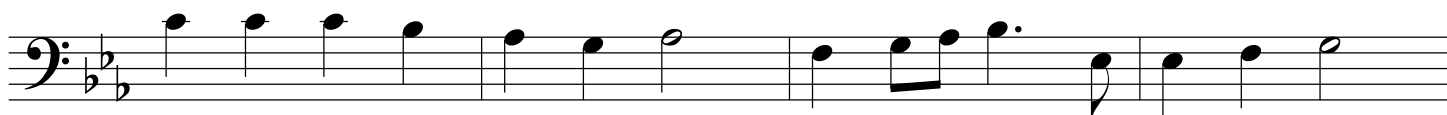
God Rest Ye Merry, Gentlemen

Musical score for the hymn "God Rest Ye Merry, Gentlemen". The score is written in bass clef, 4/4 time, and B-flat major. It consists of five staves of music. The first staff begins with a whole rest followed by a quarter rest, then a series of eighth and quarter notes. The second staff continues with quarter notes. The third staff features a mix of quarter and eighth notes. The fourth staff includes a quarter note followed by eighth notes. The fifth staff concludes with a quarter note and a whole rest.

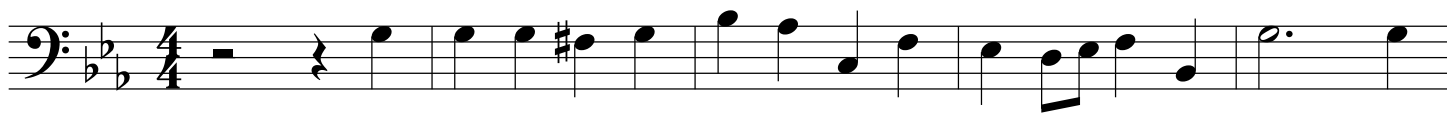
Away In A Manger

Musical score for the hymn "Away In A Manger". The score is written in bass clef, 3/4 time, and B-flat major. It consists of four staves of music. The first staff starts with two quarter rests, followed by quarter and eighth notes. The second staff continues with quarter and eighth notes. The third staff features quarter and eighth notes. The fourth staff concludes with quarter and eighth notes, ending with a whole rest.

Hark The Herlad Angels Sing



O Little Town Of Bethlehem



Joy To The World

Three staves of musical notation for 'Joy To The World'. The first staff begins with a bass clef, a key signature of two flats (B-flat major), and a 4/4 time signature. The melody consists of quarter and eighth notes. The second staff continues the melody with some notes beamed together. The third staff concludes the piece with a double bar line.

O Come, O Come, Emmanuel

Three staves of musical notation for 'O Come, O Come, Emmanuel'. The first staff begins with a bass clef, a key signature of two flats (B-flat major), and a 4/4 time signature. The melody is primarily composed of quarter notes. The second staff continues the melody. The third staff concludes the piece with a double bar line.

O Come All Ye Faithful

Three staves of musical notation for 'O Come All Ye Faithful'. The first staff begins with a bass clef, a key signature of two flats (B-flat major), and a 4/4 time signature. The melody consists of quarter and eighth notes. The second staff continues the melody. The third staff concludes the piece with a double bar line.

Silent Night

Three staves of musical notation for the piece 'Silent Night'. The music is written in bass clef, B-flat major, and 3/4 time. The first staff begins with a treble clef and a 3/4 time signature. The melody consists of dotted half notes and quarter notes, creating a calm and serene atmosphere.

What Child Is This

Four staves of musical notation for the piece 'What Child Is This'. The music is written in bass clef, B-flat major, and 3/4 time. The melody features a mix of quarter, eighth, and dotted half notes, with some chromatic movement in the lower staves.

Angels We Have Heard On High

Three staves of musical notation for the piece 'Angels We Have Heard On High'. The music is written in bass clef, B-flat major, and 4/4 time. The melody is characterized by a rhythmic pattern of eighth and sixteenth notes, often grouped with slurs, giving it a more active and joyful feel.

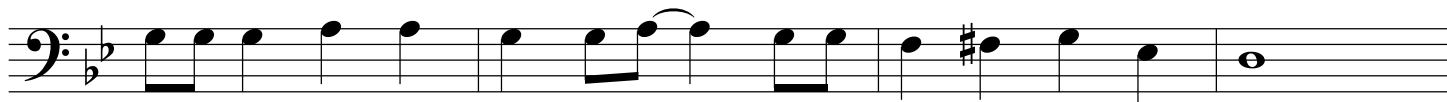
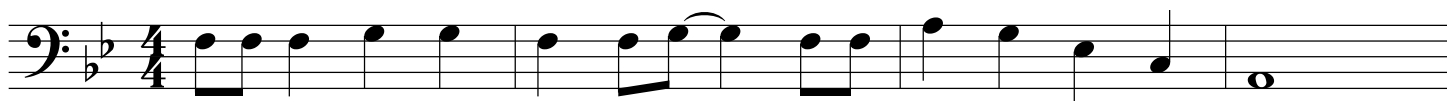
Have Yourself A Merry Little Christmas

Musical score for 'Have Yourself A Merry Little Christmas' in bass clef, 4/4 time. The score consists of five staves. The first staff begins with a treble clef and a 4/4 time signature. The key signature has two flats (B-flat and E-flat). The melody is written in the bass clef. The first staff contains the first two measures of the melody. The second staff contains the next two measures. The third staff contains the next two measures. The fourth staff contains the next two measures. The fifth staff contains the final two measures, ending with a double bar line.

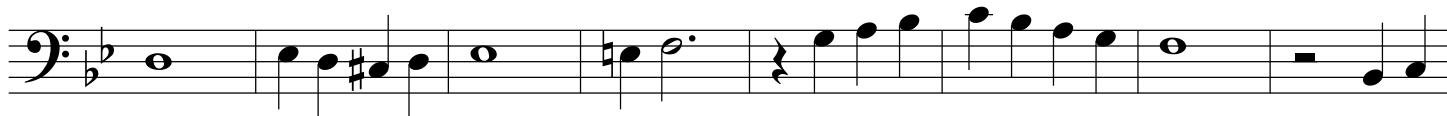
Rudolph The Red Nosed Reindeer

Musical score for 'Rudolph The Red Nosed Reindeer' in bass clef, 4/4 time. The score consists of four staves. The first staff begins with a treble clef and a 4/4 time signature. The key signature has two flats (B-flat and E-flat). The melody is written in the bass clef. The first staff contains the first two measures of the melody. The second staff contains the next two measures. The third staff contains the next two measures. The fourth staff contains the final two measures, ending with a double bar line.

Rockin Around The Christmas Tree



White Christmas



Santa Claus Is Coming To Town

The image displays a musical score for the song "Santa Claus Is Coming To Town" in bass clef, 4/4 time, and B-flat major. The score is organized into eight horizontal staves. The first staff begins with a whole rest, followed by a quarter rest, and then a series of eighth and quarter notes. The second staff continues the melody with quarter and eighth notes, ending with a quarter rest and a quarter note. The third staff repeats the initial melodic phrase. The fourth staff continues the melody with quarter and eighth notes. The fifth staff features a sequence of quarter notes. The sixth staff continues with quarter and eighth notes. The seventh staff repeats the initial melodic phrase. The eighth and final staff concludes the piece with a sequence of quarter notes and a whole note, ending with a double bar line.

Frosty The Snowman



Let It Snow

First staff of music in bass clef, 4/4 time, key of B-flat major. It begins with a whole rest followed by a quarter rest, then contains a series of eighth and quarter notes.

Second staff of music in bass clef, 4/4 time, key of B-flat major. It continues the melodic line with eighth and quarter notes.

Third staff of music in bass clef, 4/4 time, key of B-flat major. It continues the melodic line with eighth and quarter notes.

Fourth staff of music in bass clef, 4/4 time, key of B-flat major. It continues the melodic line with eighth and quarter notes.

Fifth staff of music in bass clef, 4/4 time, key of B-flat major. It continues the melodic line with eighth and quarter notes.

Sixth staff of music in bass clef, 4/4 time, key of B-flat major. It continues the melodic line with eighth and quarter notes.

Seventh staff of music in bass clef, 4/4 time, key of B-flat major. It continues the melodic line with eighth and quarter notes.

Eighth staff of music in bass clef, 4/4 time, key of B-flat major. It concludes the melodic line with eighth and quarter notes, ending with a double bar line.