

Christmas Songs for Band Kids

Tenor Saxophone

The following is a collection of traditional Christmas hymns and popular songs for band students to play for fun. The songs are in no particular order. The songs are transposed for each instrument so that you can play together with your friends. Have fun!

Jingle Bells

Two staves of musical notation for the Tenor Saxophone part of "Jingle Bells". The music is in 4/4 time and G major. The first staff contains the first 12 measures, and the second staff contains the remaining 12 measures. The melody is a simple, rhythmic sequence of eighth and quarter notes.

Up On The Housetop

Two staves of musical notation for the Tenor Saxophone part of "Up On The Housetop". The music is in 4/4 time and G major. The first staff contains the first 12 measures, and the second staff contains the remaining 12 measures. The melody features eighth-note runs and quarter notes.

Jolly Old St. Nicholas

Two staves of musical notation for the Tenor Saxophone part of "Jolly Old St. Nicholas". The music is in 4/4 time and F major. The first staff contains the first 12 measures, and the second staff contains the remaining 12 measures. The melody is characterized by eighth-note patterns and quarter notes.

We Wish You A Merry Christmas

Musical notation for the first two staves of 'We Wish You A Merry Christmas'. The first staff begins with a treble clef, a key signature of one flat (Bb), and a 3/4 time signature. The melody consists of quarter and eighth notes. The second staff continues the melody with quarter and eighth notes, ending with a double bar line.

Deck The Halls

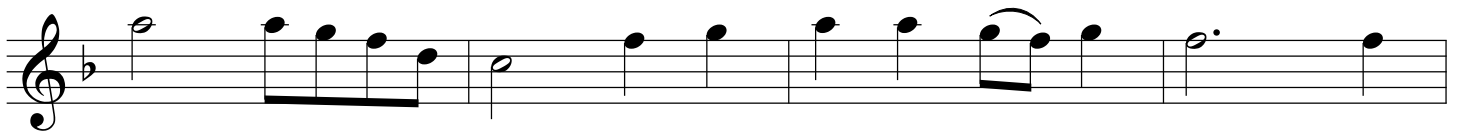
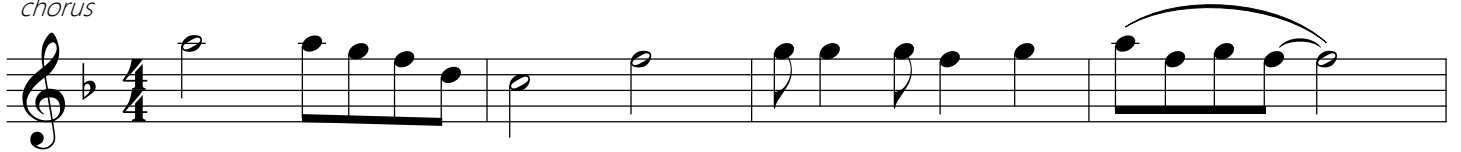
Musical notation for the first three staves of 'Deck The Halls'. The first staff begins with a treble clef, a key signature of one flat (Bb), and a 4/4 time signature. It includes a repeat sign at the beginning. The melody is composed of quarter and eighth notes. The second and third staves continue the melody with quarter and eighth notes, ending with a double bar line.

The First Noel

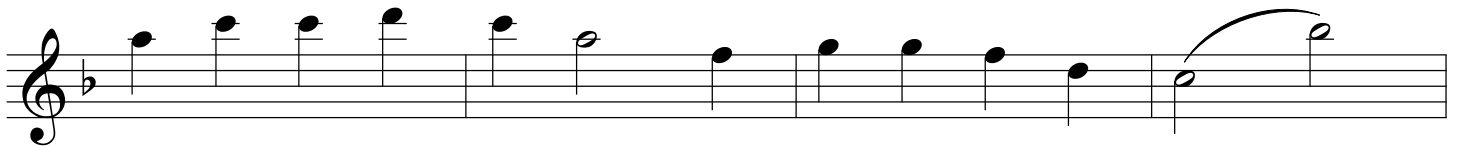
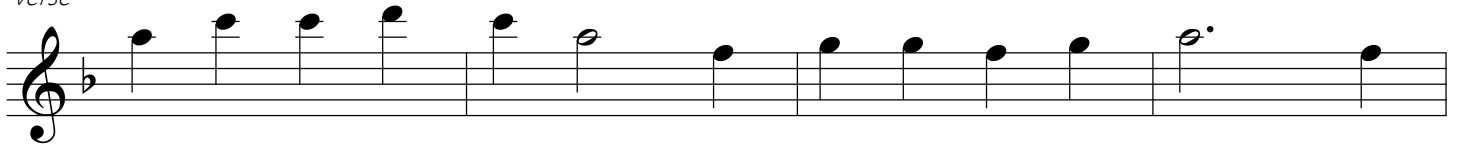
Musical notation for the first three staves of 'The First Noel'. The first staff begins with a treble clef, a key signature of one flat (Bb), and a 3/4 time signature. The melody is composed of quarter and eighth notes. The second and third staves continue the melody with quarter and eighth notes, ending with a double bar line.

Go Tell It On The Mountain

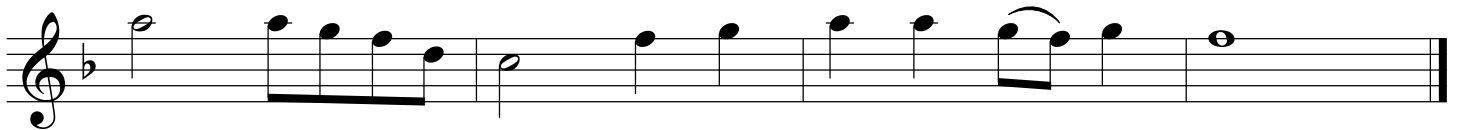
chorus



verse

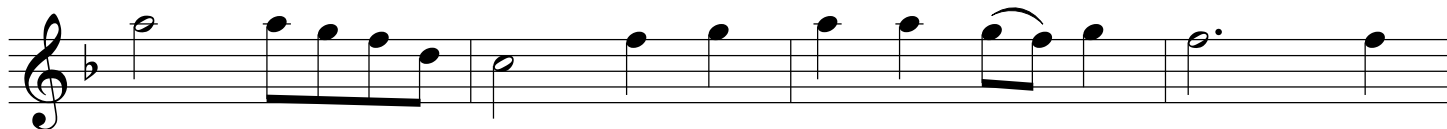
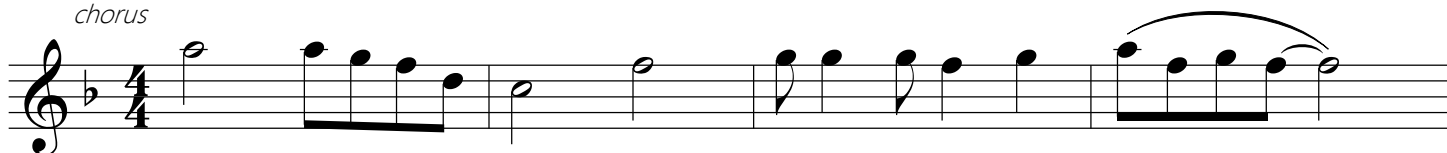


chorus

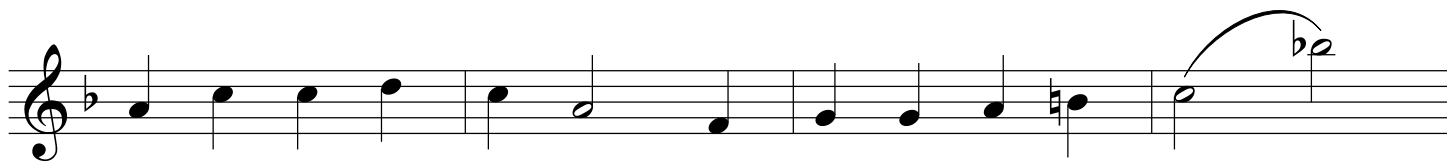
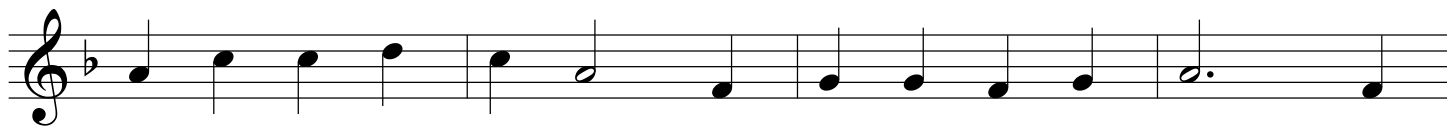


Go Tell It On The Mountain
(version for clarinets lower register)

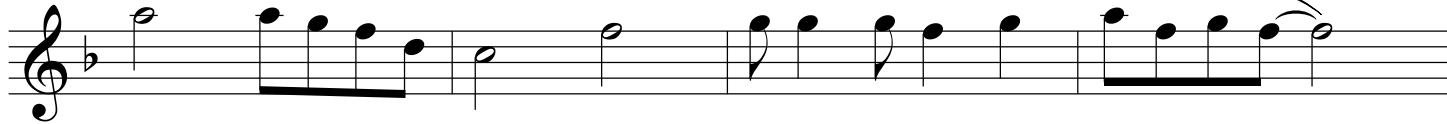
chorus



verse



chorus



Hark The Herlad Angels Sing

Musical score for 'Hark The Herlad Angels Sing' in 4/4 time, featuring five staves of music. The key signature has one flat (B-flat). The melody consists of quarter and eighth notes, with some notes marked with accents. The piece concludes with a double bar line.

O Little Town Of Bethlehem

Musical score for 'O Little Town Of Bethlehem' in 4/4 time, featuring four staves of music. The key signature has one flat (B-flat). The melody begins with a whole rest followed by quarter and eighth notes, including a sharp sign (F#) on the second staff. The piece concludes with a double bar line.

Joy To The World

Musical score for 'Joy To The World' in 4/4 time, G major. The score consists of three staves. The first staff begins with a treble clef and a 4/4 time signature. The melody is written in a simple, joyful style with quarter and eighth notes. The second and third staves continue the melody with various rhythmic patterns and phrasing, ending with a double bar line.

O Come, O Come, Emmanuel

Musical score for 'O Come, O Come, Emmanuel' in 4/4 time, B-flat major. The score consists of three staves. The first staff begins with a treble clef, a B-flat key signature, and a 4/4 time signature. The melody is written in a more solemn and contemplative style, featuring a mix of quarter, eighth, and sixteenth notes. The second and third staves continue the melody, ending with a double bar line.

O Come All Ye Faithful

Musical score for 'O Come All Ye Faithful' in 4/4 time, B-flat major. The score consists of three staves. The first staff begins with a treble clef, a B-flat key signature, and a 4/4 time signature. The melody is written in a solemn and contemplative style, featuring a mix of quarter, eighth, and sixteenth notes. The second and third staves continue the melody, ending with a double bar line.

Silent Night

Musical notation for the song "Silent Night". It consists of three staves of music in 3/4 time. The first staff begins with a treble clef and a 3/4 time signature. The melody is written in a simple, lyrical style with dotted rhythms and rests.

What Child Is This

Musical notation for the song "What Child Is This". It consists of four staves of music in 3/4 time. The first staff begins with a treble clef, a key signature of one flat (B-flat), and a 3/4 time signature. The melody is more complex than "Silent Night", featuring many eighth and sixteenth notes.

Angels We Have Heard On High

Musical notation for the song "Angels We Have Heard On High". It consists of three staves of music in 4/4 time. The first staff begins with a treble clef, a key signature of one flat (B-flat), and a 4/4 time signature. The melody is characterized by a fast, repetitive eighth-note pattern in the first few measures.

Have Yourself A Merry Little Christmas

Musical score for 'Have Yourself A Merry Little Christmas' in 4/4 time. The score consists of five staves of music. The first staff begins with a treble clef and a 4/4 time signature. The melody is written in a key with one sharp (F#). The music features a mix of eighth and sixteenth notes, with some measures containing beamed eighth notes. The piece concludes with a double bar line.

Rudolph The Red Nosed Reindeer

Musical score for 'Rudolph The Red Nosed Reindeer' in 4/4 time. The score consists of four staves of music. The first staff begins with a treble clef and a 4/4 time signature. The melody is written in a key with one sharp (F#). The music features a mix of eighth and sixteenth notes, with some measures containing beamed eighth notes. The piece concludes with a double bar line.

Rockin Around The Christmas Tree

Musical notation for the song "Rockin Around The Christmas Tree". It consists of four staves of music in 4/4 time, written in treble clef. The melody is characterized by eighth and sixteenth notes, with a key signature of one sharp (F#). The first staff begins with a treble clef and a 4/4 time signature. The piece concludes with a double bar line at the end of the fourth staff.

White Christmas

Musical notation for the song "White Christmas". It consists of four staves of music in 4/4 time, written in treble clef. The melody features a mix of quarter, eighth, and sixteenth notes, with a key signature of one sharp (F#). The first staff begins with a treble clef and a 4/4 time signature. The piece concludes with a double bar line at the end of the fourth staff.

Frosty The Snowman

The image displays a musical score for the song "Frosty The Snowman" in 4/4 time. The score is written on ten staves, each beginning with a treble clef. The first staff includes a 4/4 time signature. The melody is composed of quarter and eighth notes, with some notes beamed together. The key signature is one sharp (F#), and the piece concludes with a double bar line. The music is presented in a clean, black-and-white format.

Let It Snow

The image displays a musical score for the song "Let It Snow". It is written in 4/4 time and features a key signature of one flat (B-flat). The score is presented on nine staves, each beginning with a treble clef and a key signature of one flat. The melody is primarily composed of quarter and eighth notes, with some dotted notes and rests. The accompaniment consists of eighth-note patterns and dotted notes. The piece concludes with a double bar line on the final staff.