

Christmas Songs for Band Kids

Trumpet
Clarinet

The following is a collection of traditional Christmas hymns and popular songs for band students to play for fun. The songs are in no particular order. The songs are transposed for each instrument so that you can play together with your friends. Have fun!

Jingle Bells

Musical notation for the song "Jingle Bells" in 4/4 time. The notation consists of two staves of music. The first staff begins with a treble clef and a 4/4 time signature. The melody is written in a single line of music, featuring a series of eighth and sixteenth notes that create a rhythmic pattern characteristic of the song. The second staff continues the melody, ending with a double bar line.

Up On The Housetop

Musical notation for the song "Up On The Housetop" in 4/4 time. The notation consists of two staves of music. The first staff begins with a treble clef and a 4/4 time signature. The melody is written in a single line of music, featuring a series of eighth and sixteenth notes that create a rhythmic pattern characteristic of the song. The second staff continues the melody, ending with a double bar line.

Jolly Old St. Nicholas

Musical notation for the song "Jolly Old St. Nicholas" in 4/4 time. The notation consists of two staves of music. The first staff begins with a treble clef, a key signature of one flat (B-flat), and a 4/4 time signature. The melody is written in a single line of music, featuring a series of eighth and sixteenth notes that create a rhythmic pattern characteristic of the song. The second staff continues the melody, ending with a double bar line.

We Wish You A Merry Christmas

Musical notation for the song 'We Wish You A Merry Christmas'. It consists of two staves of music in 3/4 time, featuring a treble clef and a key signature of one flat (Bb). The melody is simple and festive, starting with a quarter rest followed by a quarter note, then a series of eighth and quarter notes.

Deck The Halls

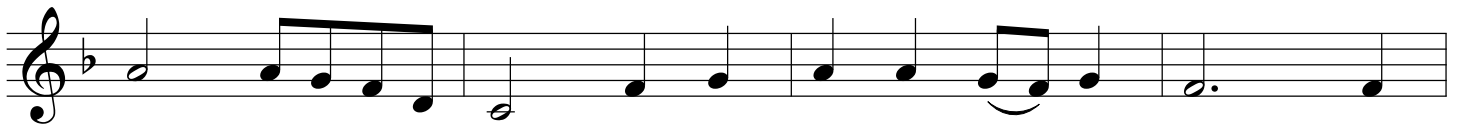
Musical notation for the song 'Deck The Halls'. It consists of three staves of music in 4/4 time, featuring a treble clef and a key signature of one flat (Bb). The melody is simple and festive, starting with a quarter note followed by a series of eighth and quarter notes.

The First Noel

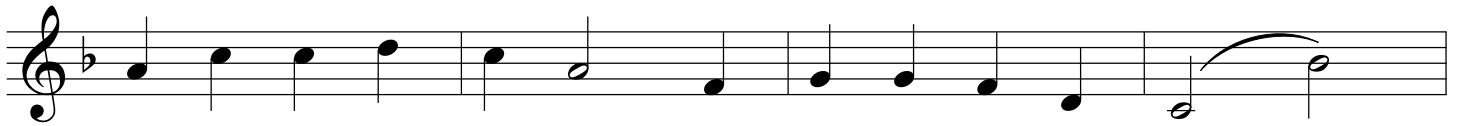
Musical notation for the song 'The First Noel'. It consists of three staves of music in 3/4 time, featuring a treble clef and a key signature of one flat (Bb). The melody is simple and festive, starting with a quarter rest followed by a quarter note, then a series of eighth and quarter notes.

Go Tell It On The Mountain

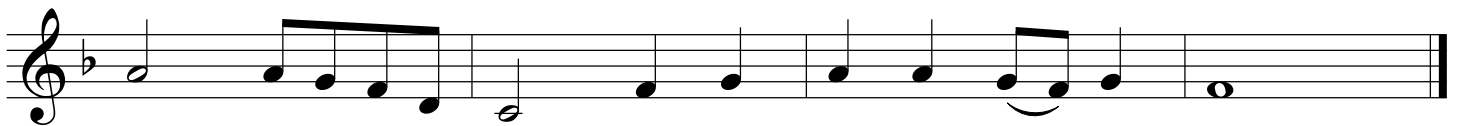
chorus



verse

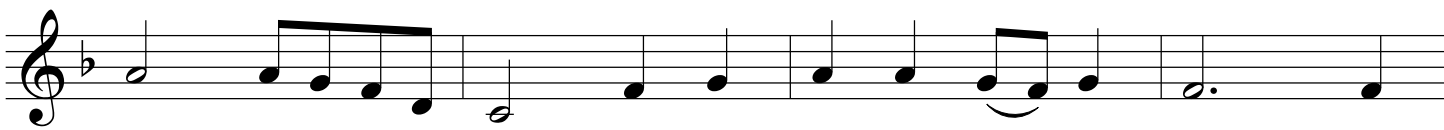


chorus

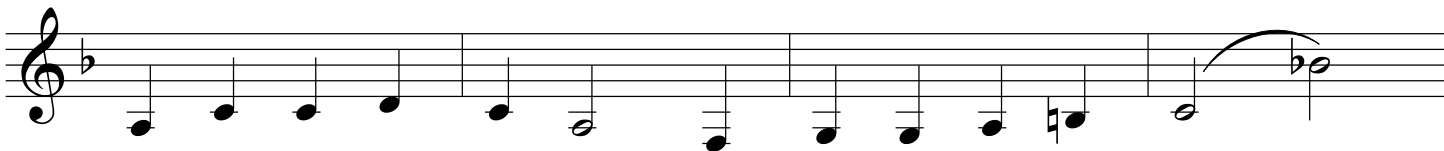
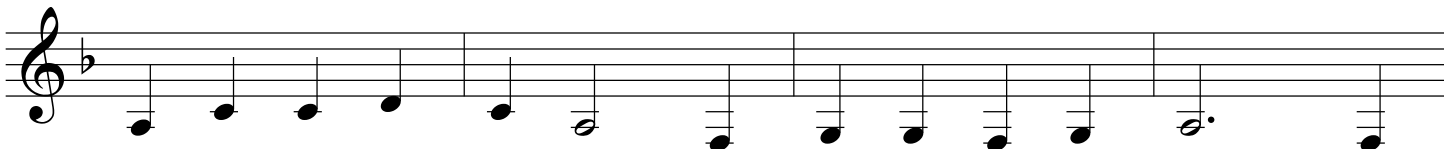


Go Tell It On The Mountain
(version for clarinets lower register)

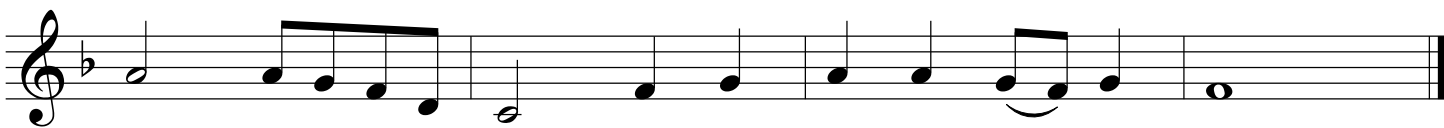
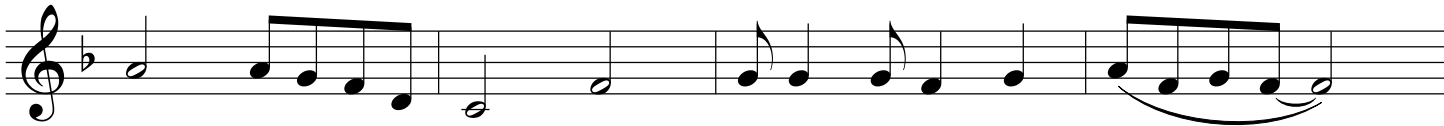
chorus



verse



chorus



Hark The Herald Angels Sing

Musical score for 'Hark The Herald Angels Sing' in G major, 4/4 time. The score consists of five staves of music. The first staff begins with a treble clef, a key signature of one flat (F major), and a 4/4 time signature. The melody is written in a simple, hymn-like style with quarter and eighth notes. The second staff continues the melody. The third staff features a more active accompaniment with eighth and sixteenth notes. The fourth and fifth staves complete the piece with a final cadence.

O Little Town Of Bethlehem

Musical score for 'O Little Town Of Bethlehem' in G major, 4/4 time. The score consists of four staves of music. The first staff begins with a treble clef, a key signature of one flat (F major), and a 4/4 time signature. The melody is written in a simple, hymn-like style with quarter and eighth notes. The second staff continues the melody. The third staff features a more active accompaniment with eighth and sixteenth notes. The fourth staff completes the piece with a final cadence.

Joy To The World

Musical score for 'Joy To The World' in 4/4 time. The score consists of three staves. The first staff begins with a treble clef, a 4/4 time signature, and a key signature of one flat (Bb). The melody starts on a whole note G4, followed by a quarter note A4, a quarter note Bb4, and a quarter note C5. The second staff continues the melody with eighth and quarter notes. The third staff concludes the piece with a final whole note G4.

O Come, O Come, Emmanuel

Musical score for 'O Come, O Come, Emmanuel' in 4/4 time. The score consists of three staves. The first staff begins with a treble clef, a 4/4 time signature, and a key signature of two flats (Bb, Eb). The melody starts with a whole rest, followed by a quarter note Eb4, and continues with a series of eighth and quarter notes. The second and third staves continue the melody, ending with a final whole note Eb4.

O Come All Ye Faithful

Musical score for 'O Come All Ye Faithful' in 4/4 time. The score consists of three staves. The first staff begins with a treble clef, a 4/4 time signature, and a key signature of two flats (Bb, Eb). The melody starts with a whole rest, followed by a quarter note Eb4, and continues with a series of eighth and quarter notes. The second and third staves continue the melody, ending with a final whole note Eb4.

Silent Night

Musical notation for the first three staves of 'Silent Night'. The first staff begins with a treble clef, a 3/4 time signature, and a key signature of one flat (B-flat). The melody consists of quarter and eighth notes. The second and third staves continue the melody with similar note values and rests.

What Child Is This

Musical notation for the first four staves of 'What Child Is This'. The first staff begins with a treble clef, a 3/4 time signature, and a key signature of two flats (B-flat and E-flat). The melody features quarter, eighth, and sixteenth notes, with some accidentals (sharps and naturals) appearing in the later staves.

Angels We Have Heard On High

Musical notation for the first three staves of 'Angels We Have Heard On High'. The first staff begins with a treble clef, a 4/4 time signature, and a key signature of one flat (B-flat). The melody is characterized by eighth-note patterns and some beamed sixteenth notes. The second and third staves continue the melody with similar rhythmic patterns.

Have Yourself A Merry Little Christmas

Musical score for 'Have Yourself A Merry Little Christmas' in 4/4 time. The score consists of five staves of music. The first four staves contain the main melody, which is written in treble clef. The fifth staff contains a single note, likely a bass line or a specific accompaniment. The melody is characterized by a mix of eighth and sixteenth notes, with a key signature of one sharp (F#).

Rudolph The Red Nosed Reindeer

Musical score for 'Rudolph The Red Nosed Reindeer' in 4/4 time. The score consists of four staves of music, all written in treble clef. The melody is primarily composed of eighth and sixteenth notes, with a key signature of one sharp (F#). The score ends with a double bar line.

Rockin Around The Christmas Tree

Musical score for 'Rockin Around The Christmas Tree' in 4/4 time. The score consists of four staves of music. The first staff begins with a treble clef and a 4/4 time signature. The melody is written in G major, starting on G4. The second staff continues the melody, featuring a sharp sign on the second line (F#4). The third and fourth staves complete the piece, ending with a double bar line. The music is characterized by a rhythmic pattern of eighth and quarter notes.

White Christmas

Musical score for 'White Christmas' in 4/4 time. The score consists of four staves of music. The first staff begins with a treble clef and a 4/4 time signature. The melody is written in G major, starting on G4. The second staff continues the melody, featuring a sharp sign on the second line (F#4). The third and fourth staves complete the piece, ending with a double bar line. The music is characterized by a rhythmic pattern of eighth and quarter notes.

Frosty The Snowman

The image displays a musical score for the song "Frosty The Snowman" in 4/4 time. The score is written on ten staves of music. The first staff begins with a treble clef and a 4/4 time signature. The melody consists of quarter and eighth notes, with some beamed eighth notes. The key signature is one flat (B-flat). The score concludes with a double bar line and a repeat sign.

Let It Snow

The image displays a musical score for the song "Let It Snow". The score is written on a single staff in 4/4 time, with a key signature of one flat (B-flat). The melody begins with a quarter rest, followed by a quarter note G4, a quarter note A4, and a quarter note B4. The melody continues with a series of eighth and quarter notes, including a dotted quarter note G4, a quarter note F4, and a quarter note E4. The score concludes with a double bar line.